

1-5-2012

Circulation @ Seton Hall

Lisa Rose-Wiles
Seton Hall University

Sulekha Kalyan
Seton Hall University

Follow this and additional works at: http://scholarship.shu.edu/lib_pub

 Part of the [Library and Information Science Commons](#)

Recommended Citation

Rose-Wiles, Lisa and Kalyan, Sulekha, "Circulation @ Seton Hall" (2012). *Library Publications*. 32.
http://scholarship.shu.edu/lib_pub/32

CIRCULATION @ SETON HALL

*Lisa Rose-Wiles & Sulekha Kalyan
Seton Hall University*

VALE Users'/NJLA CUS/NJ ACRL Conference,
Rutgers University, January 5, 2012

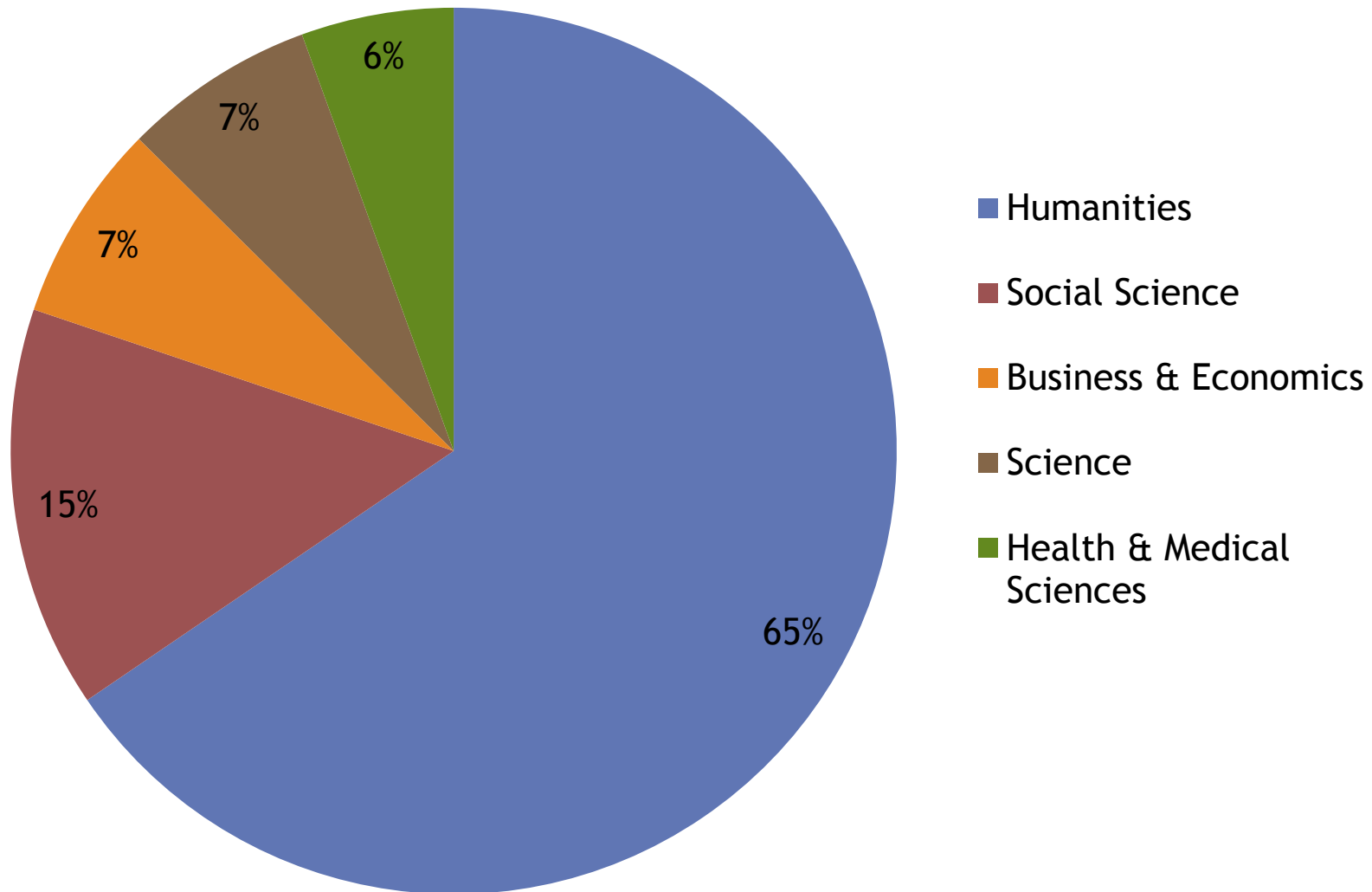
Seton Hall University

- ◎ **Private, Catholic University**
 - 4,871 undergraduates (88% full time)
 - 3,293 graduates (33% full time).
 - ~800 faculty & staff
- ◎ **Other Walsh Library users**
 - SHU Alumni; others via ReBL, VALE, PALCI, ILL
 - Extended library hours attract local students
- ◎ **Our print book collection.**
 - 500,000+ books (excluding journals, archives and special collections)
 - Concerns re space, maintenance, loss or theft, lack of use/declining circulation.

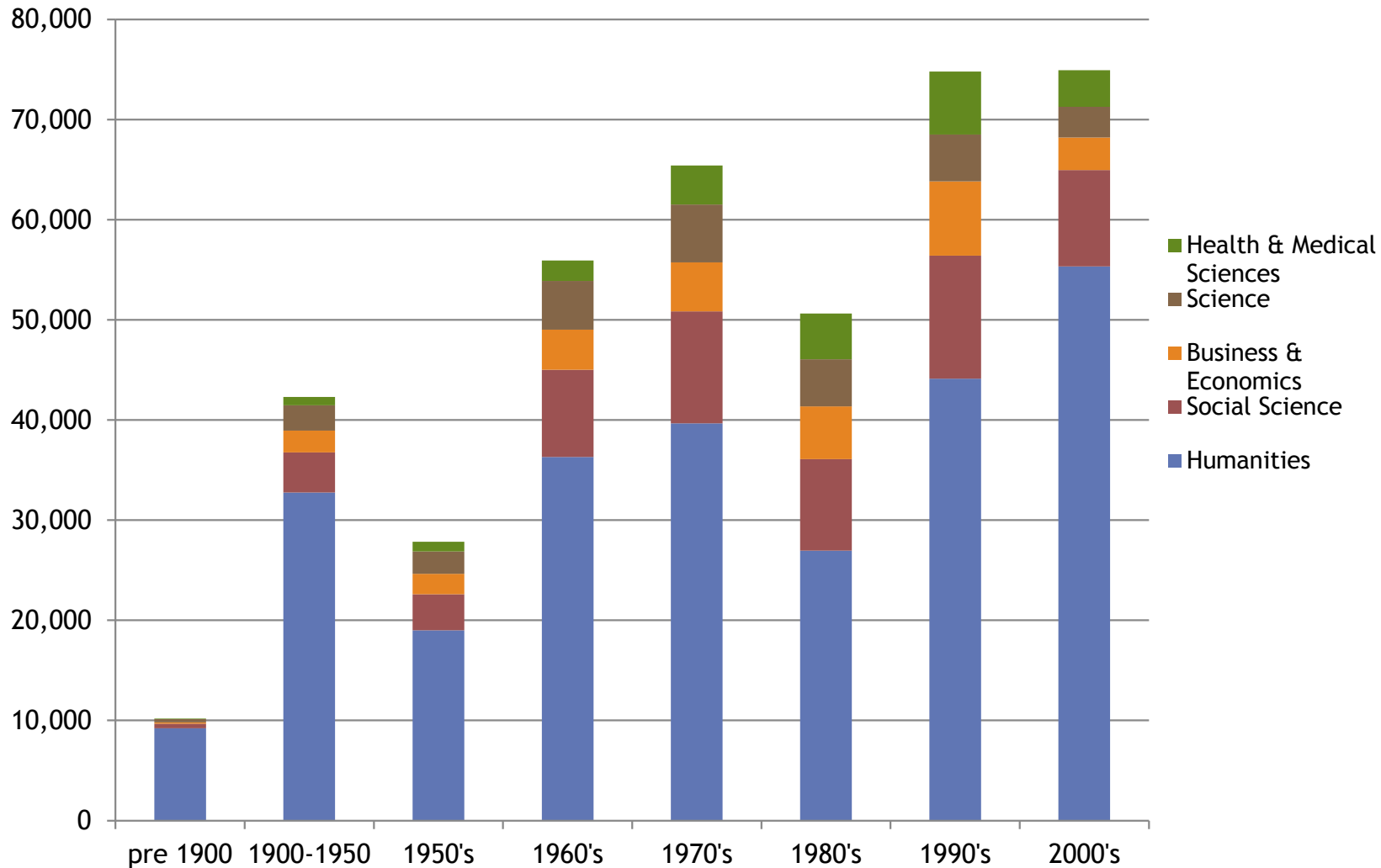


1. SHU books by subject area.

Based on OCLC data July 2011, n = 402,112
excluding government documents & "other"

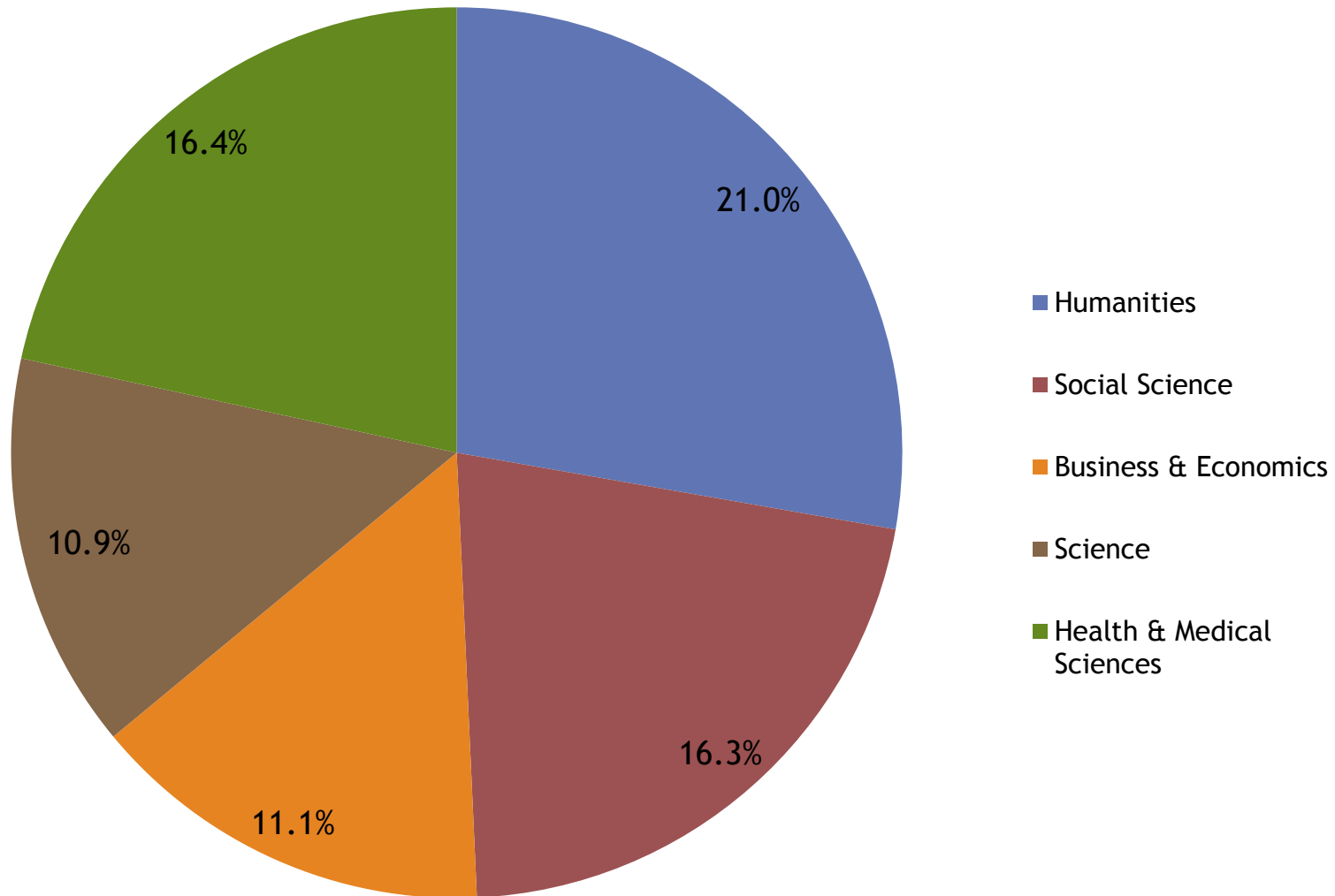


2. Number of books in subject area by publication date range.



3. Proportion of books in major subject areas published since 2000

(n = 74,945)



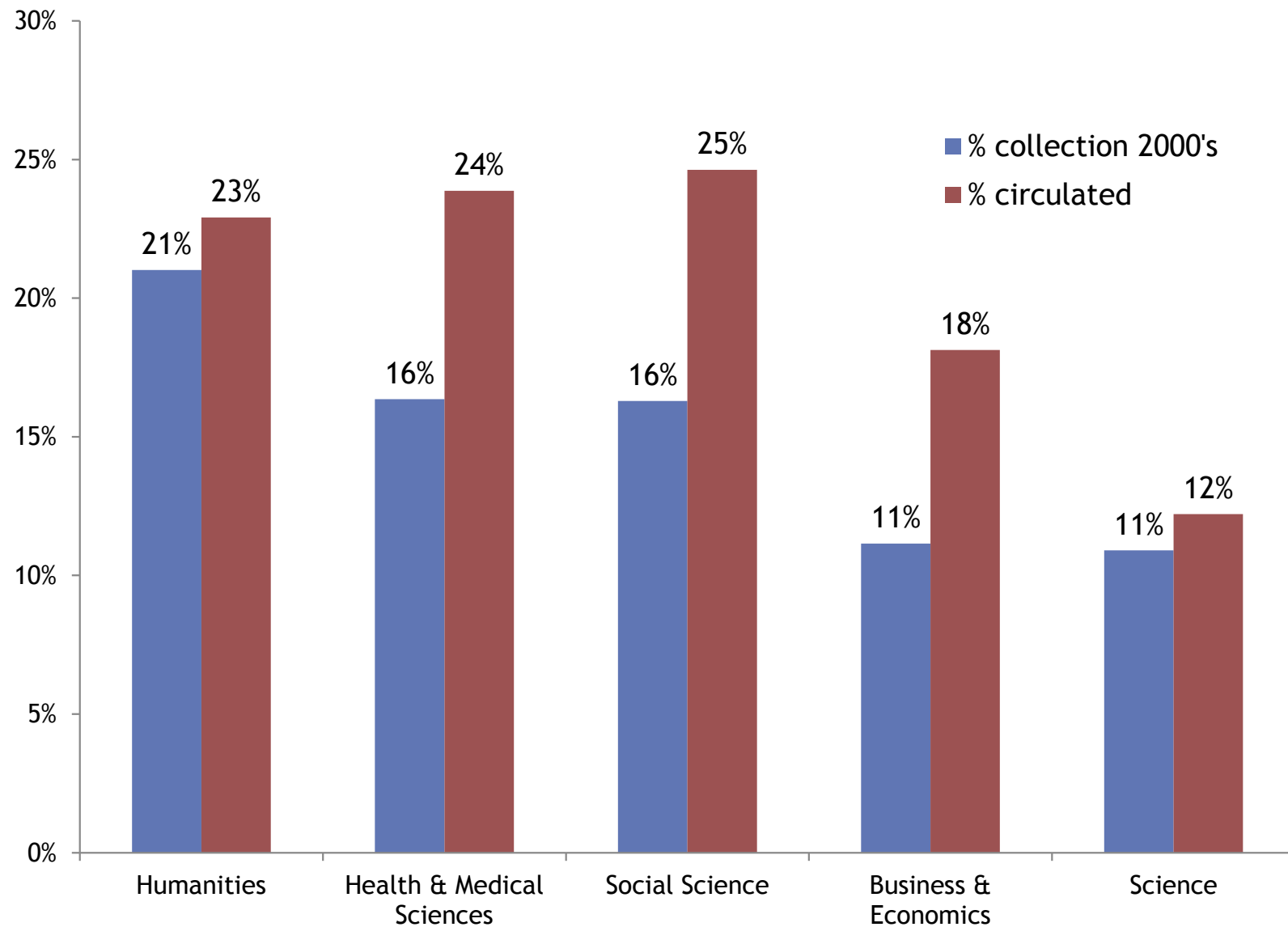
4. Circulation of SHU books

based on OCLC circulation data 2005-9

Subject area	% books in subject published in 2000's	% books in subject circulated between 2005 and 2009	Average checkouts 2005-9
Arts	34.4%	28.6%	1.73
Sociology	18.4%	27.9%	2.05
History	22.0%	25.0%	1.95
Health & Medical Sciences	16.4%	23.9%	2.13
Political Science	14.8%	23.7%	2.08
Education	17.1%	23.4%	1.96
Anthropology	30.0%	23.0%	1.83
Psychology	12.0%	22.7%	1.90
Law	14.6%	21.5%	1.82
Other	19.8%	21.1%	1.88
Philosophy & Religion	16.0%	20.9%	1.89
Business & Economics	11.1%	18.1%	1.73
Science	10.9%	12.2%	1.66
Literature	11.7%	9.2%	1.68
Average	17.8%	21.5%	1.88

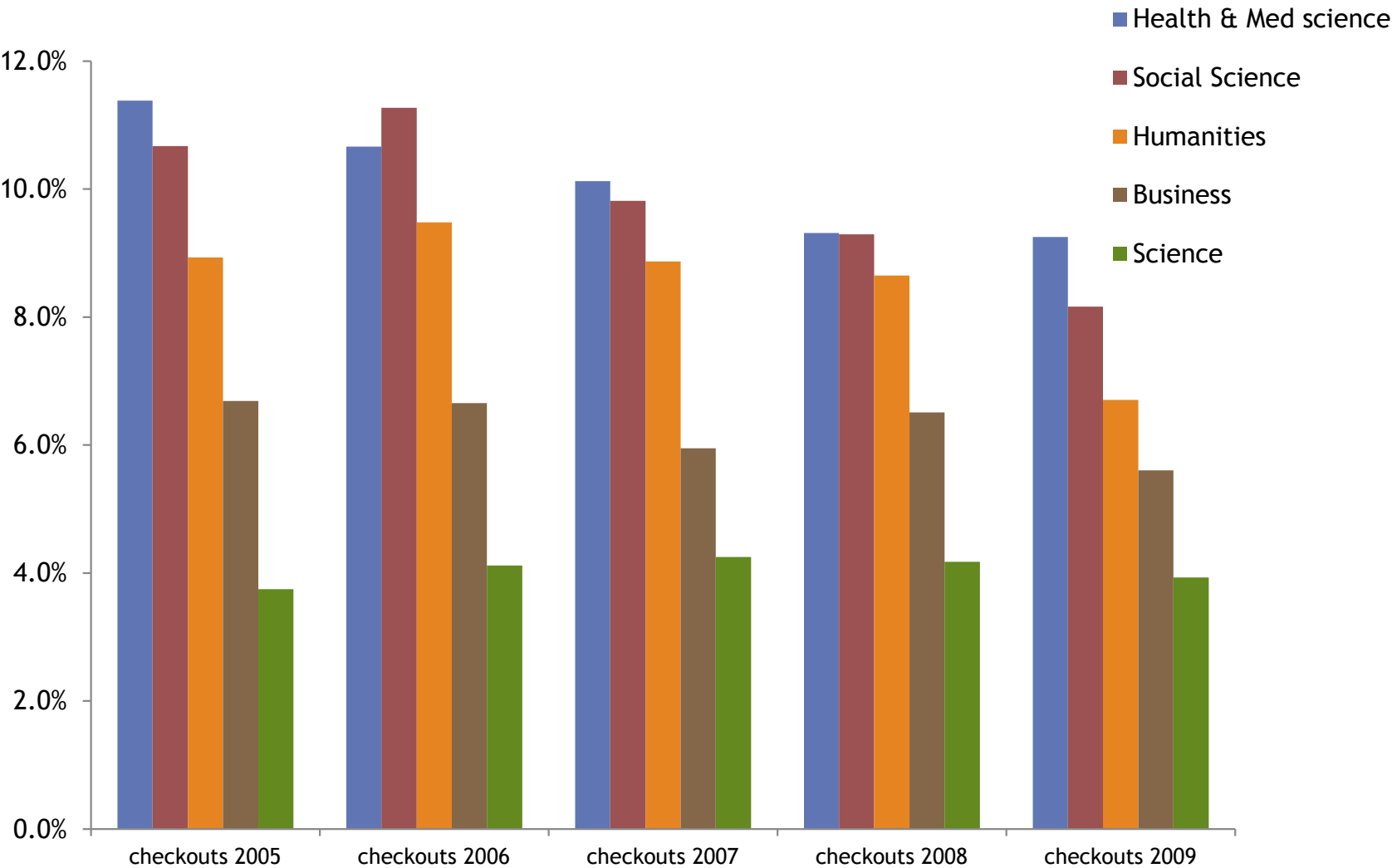
5. Currency vs. circulation

($r = 0.614$, $df = 12$, $p < 0.05$)



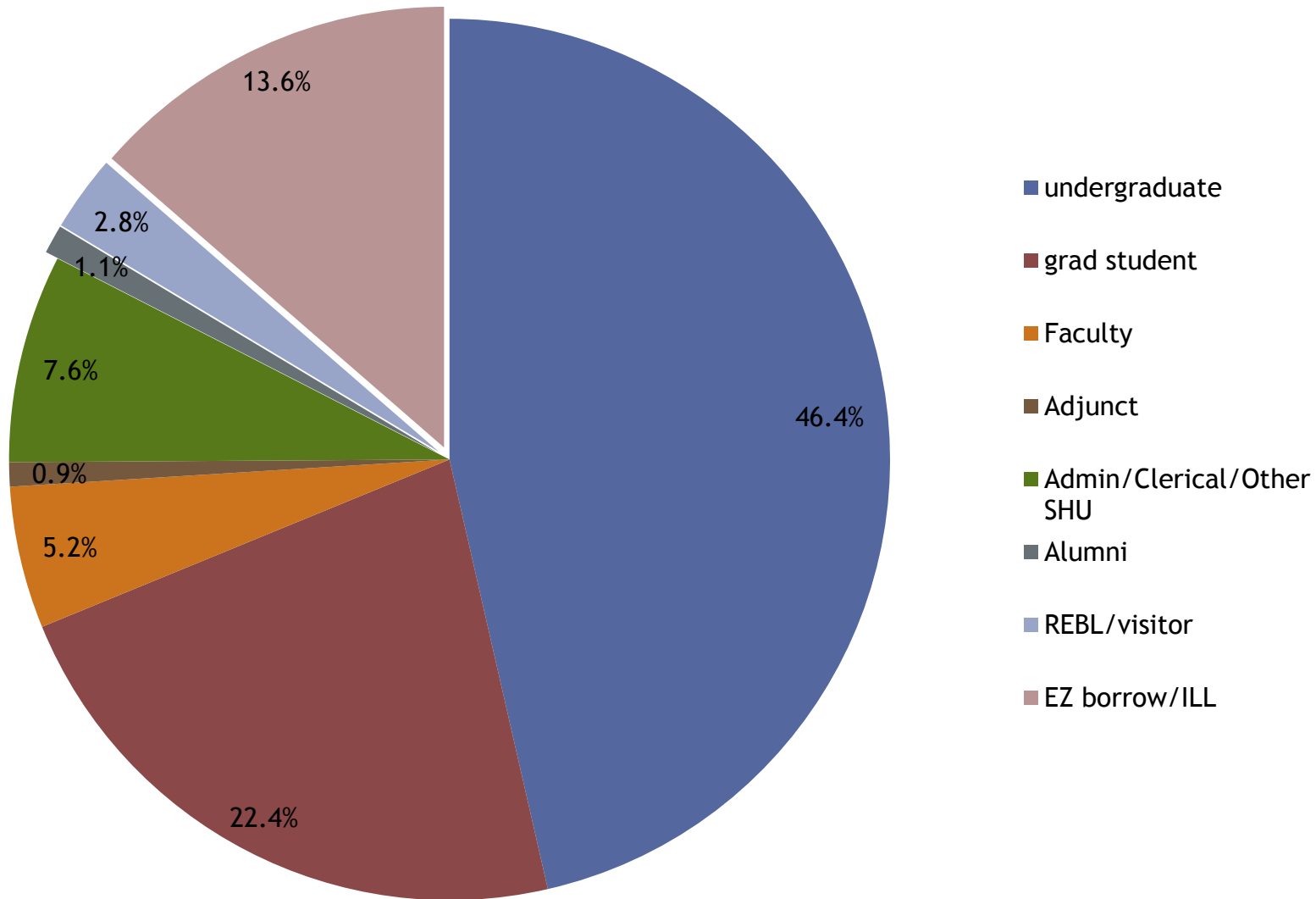
6. total checkouts by year and subject 2005-9

(n = 19,208 checkouts)

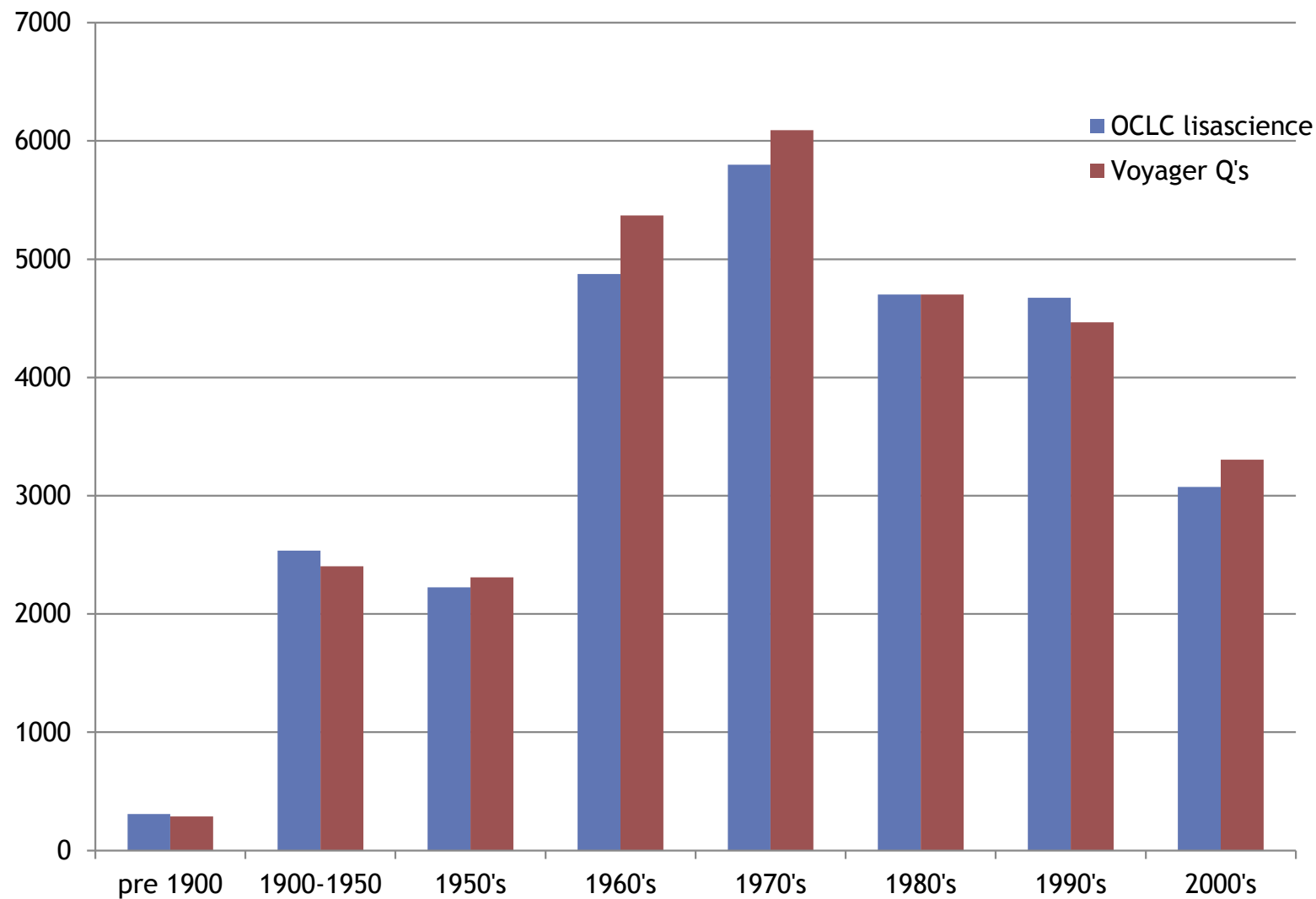


7. Checkouts by patron type,

from Voyager data July 2010-11 (n = 38,395 checkouts)

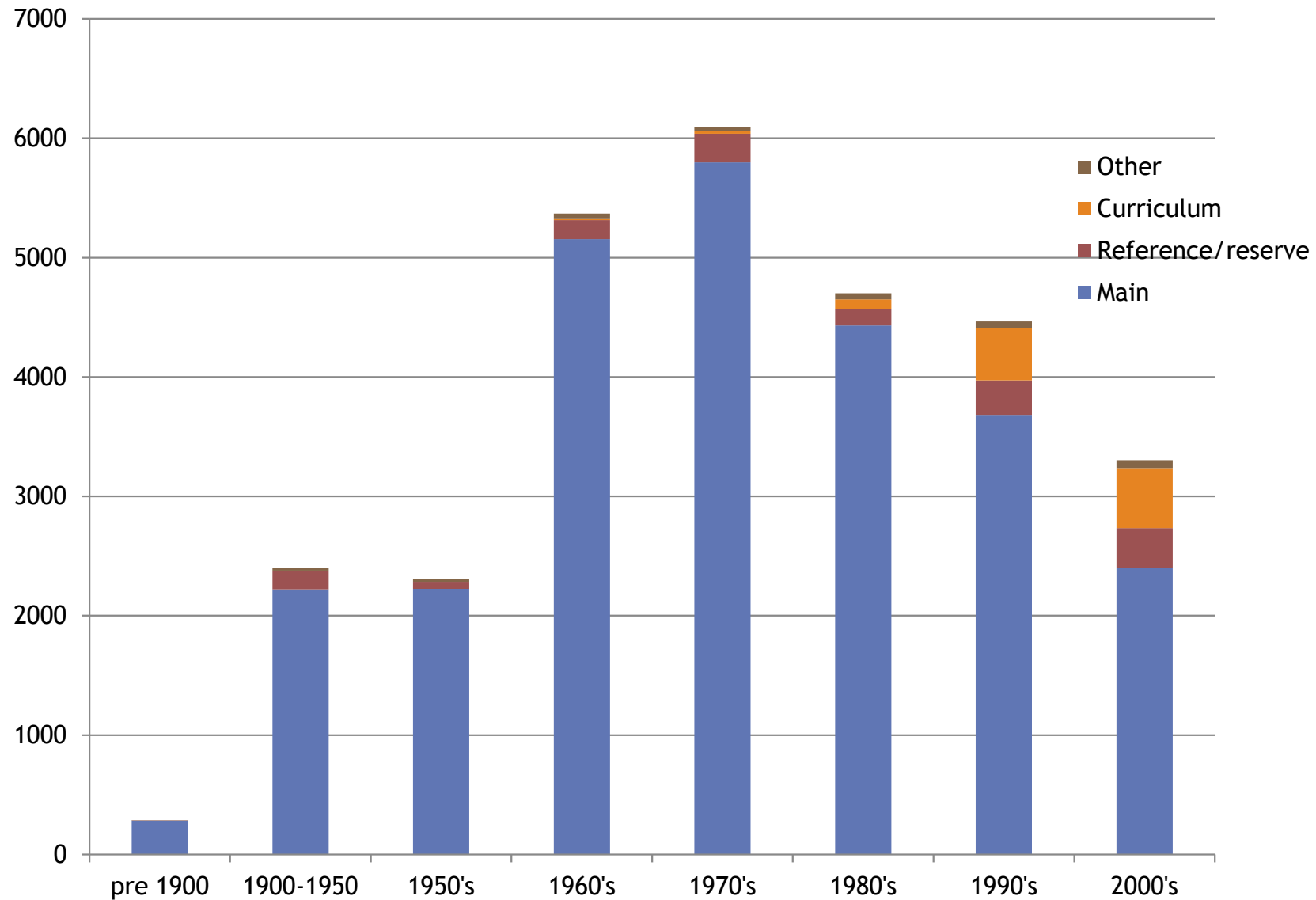


8. Science books, OCLC vs. Voyager by date (OCLC = 28,192; Voyager = 28,939 as at July 2011)



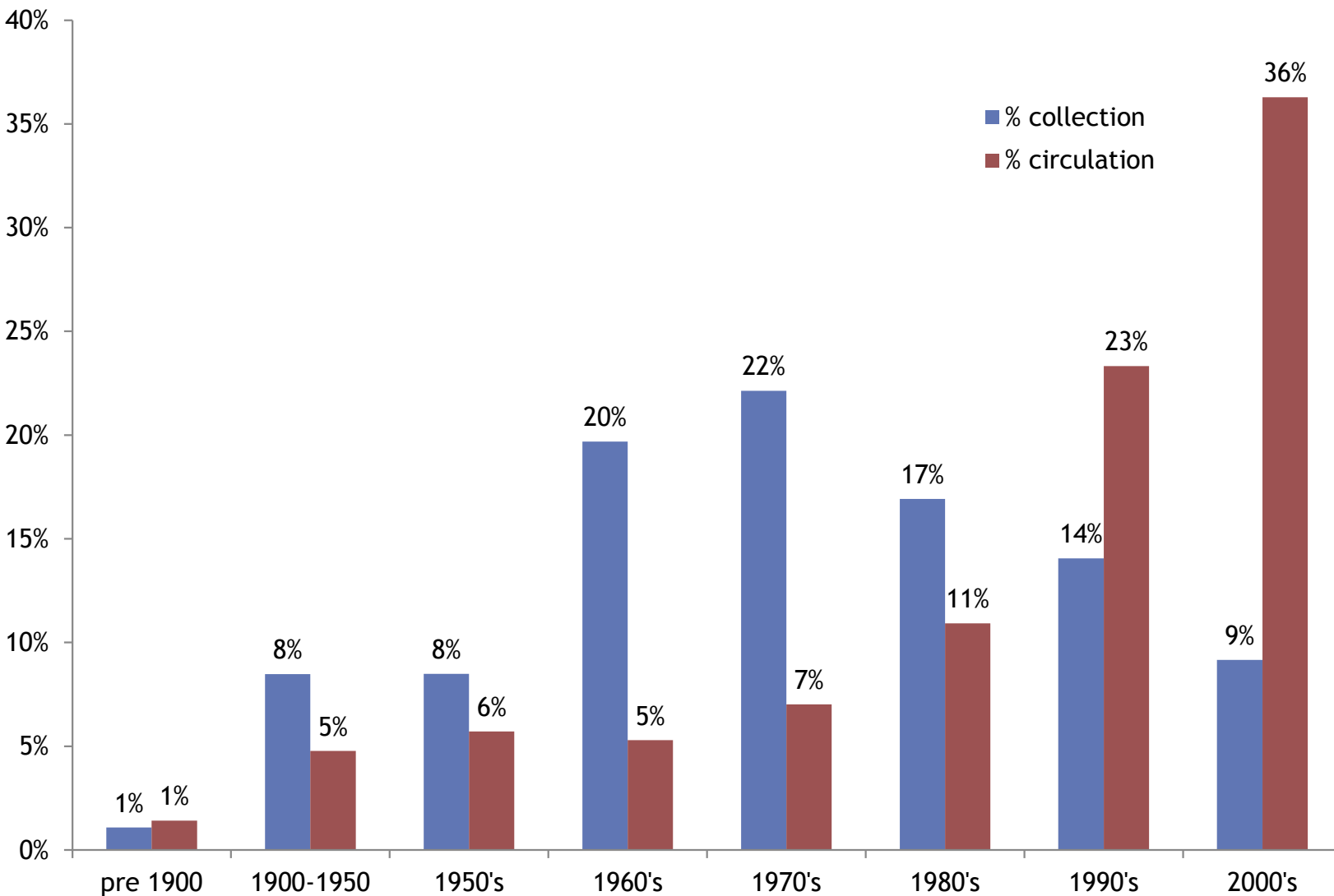
9. Science books by date and location

(Voyager data, n = 28,939)

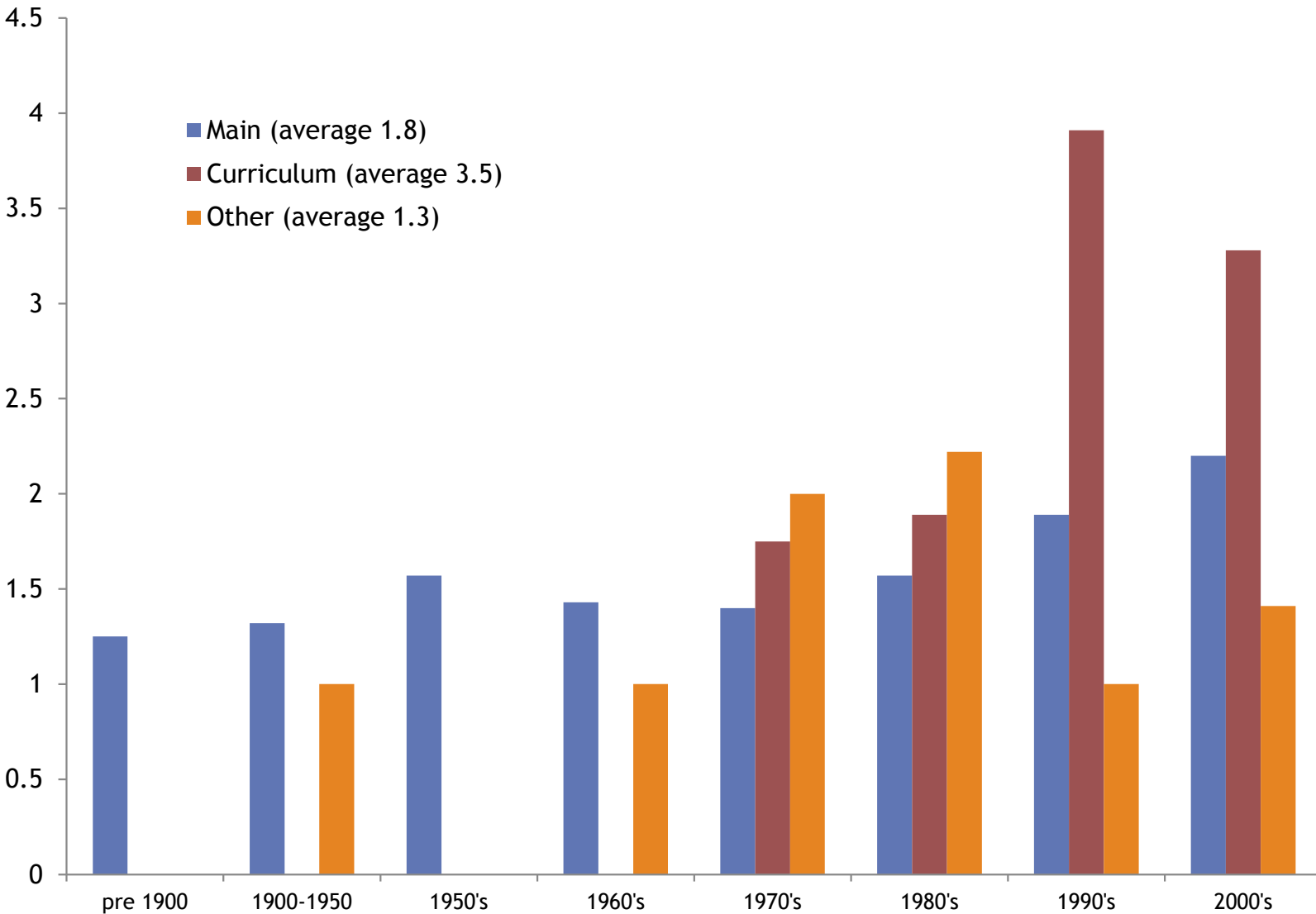


10. Main science collection: circulation vs. publication date

(from Voyager data, n = 26,190, average circulated 12%)

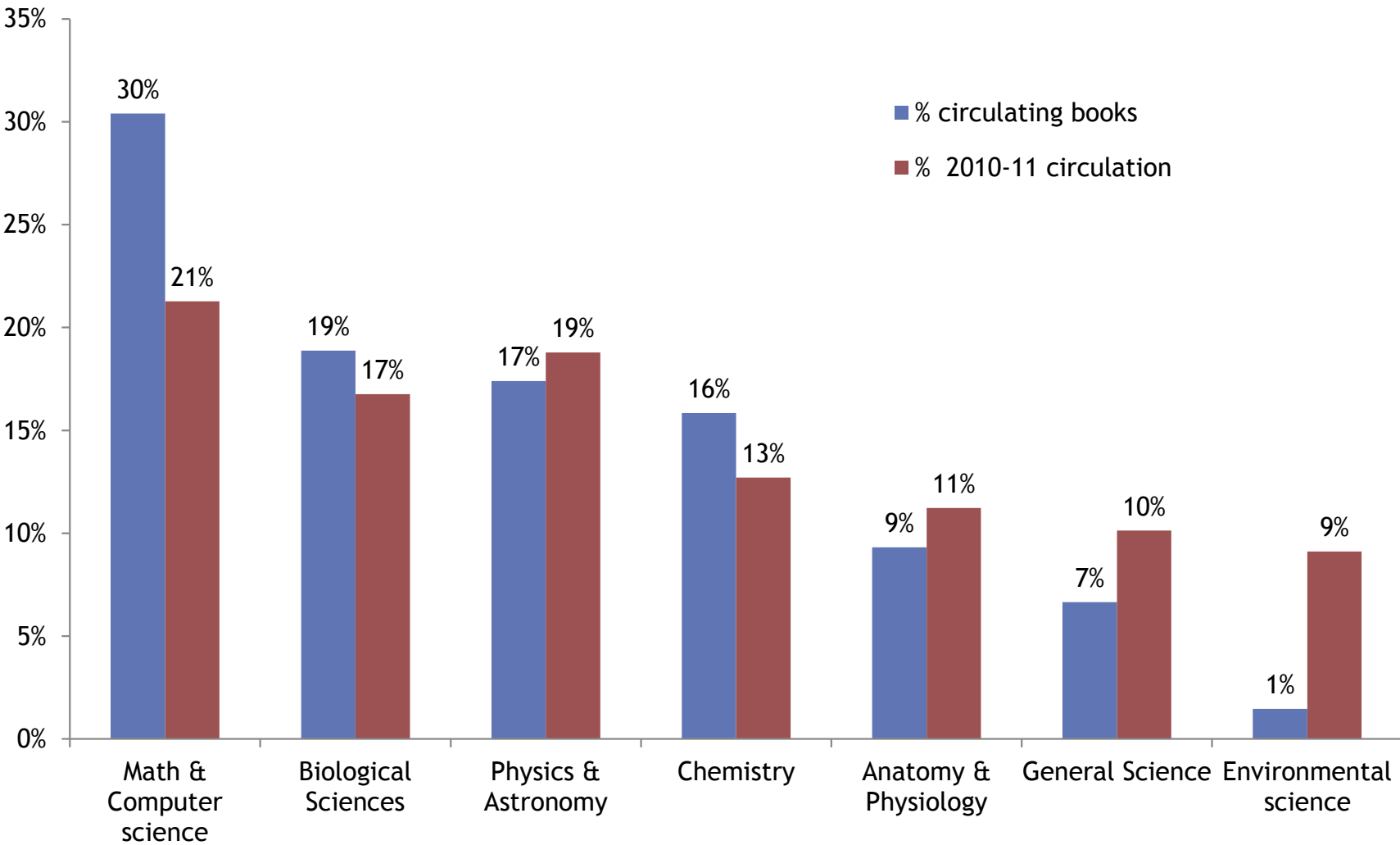


11. Average times science Books circulated 2005-10 by location



12. % of science collection vs. % of science books circulations 2010-11 by subject

(from Voyager data, n = 1246 science book checkouts)



CONCLUSIONS

- ⦿ 21.5% of our books were checked out at least once (average twice) in the five years 2005-9.
- ⦿ There is variation by subject area, but generally more recent books are more likely to circulate.
- ⦿ Our book collection is stronger and more current in the humanities than in other subject areas.
- ⦿ Our science book collection is small & outdated: 6.4% of total books, almost 90% >10 years old.
- ⦿ Over 36% of “recent” science books circulated & circulation has not declined in past 5 years.
- ⦿ There is not a good fit between subject collections and subject circulation.

RECOMMENDATIONS

- ⦿ Judicious weeding is clearly needed
 - some older books are still in demand (or do students disregard publication dates?).
- ⦿ We need a better match between our academic programs and collections, especially in the underfunded non-humanities subjects.
 - We need more consultation with faculty, book store, students.
- ⦿ Begin a pilot PDA program for e-books with ebrary.
 - 48% of hand-picked e-books were used at least once in the first year. PDA should allow better fit at less cost.
- ⦿ Budget, budget, budget!
 - Less money = fewer resources. There is no magic wand.

PROGRESS

- ◎ Inventory and weeding is well underway
 - Better World Books a market/recycler for many unwanted books. We have sent 50+ boxes already.
- ◎ Efforts to reach users ongoing
 - And we are consulting with bookstore re textbooks
- ◎ Pilot PDA has begun with ebrary.
 - We are being conservative (selection not broad profile) but have added 750 books so far.
- ◎ Budget, budget, budget!
 - Driving us to “just in time” vs. “Just in case” ... good, bad, indifferent?

THANK YOU! QUESTIONS?

Lisa Rose-Wiles, Science Librarian
Sulekha Kalyan, Head of Acquisitions
Seton Hall University Libraries

Lisa.rose-wiles@shu.edu

Sulekha.kalyan@shu.edu