

4-3-2004

# From Colombia to Japan: Anthropology in the Real World

Leandra Naranjo  
*Seton Hall University*

Reimi Takeuchi  
*Seton Hall University*

Peter Savastano  
*Seton Hall University*

Cherubim Quizon  
*Seton Hall University*

Follow this and additional works at: <https://scholarship.shu.edu/petersheim-exposition>



Part of the [Social and Cultural Anthropology Commons](#)

---

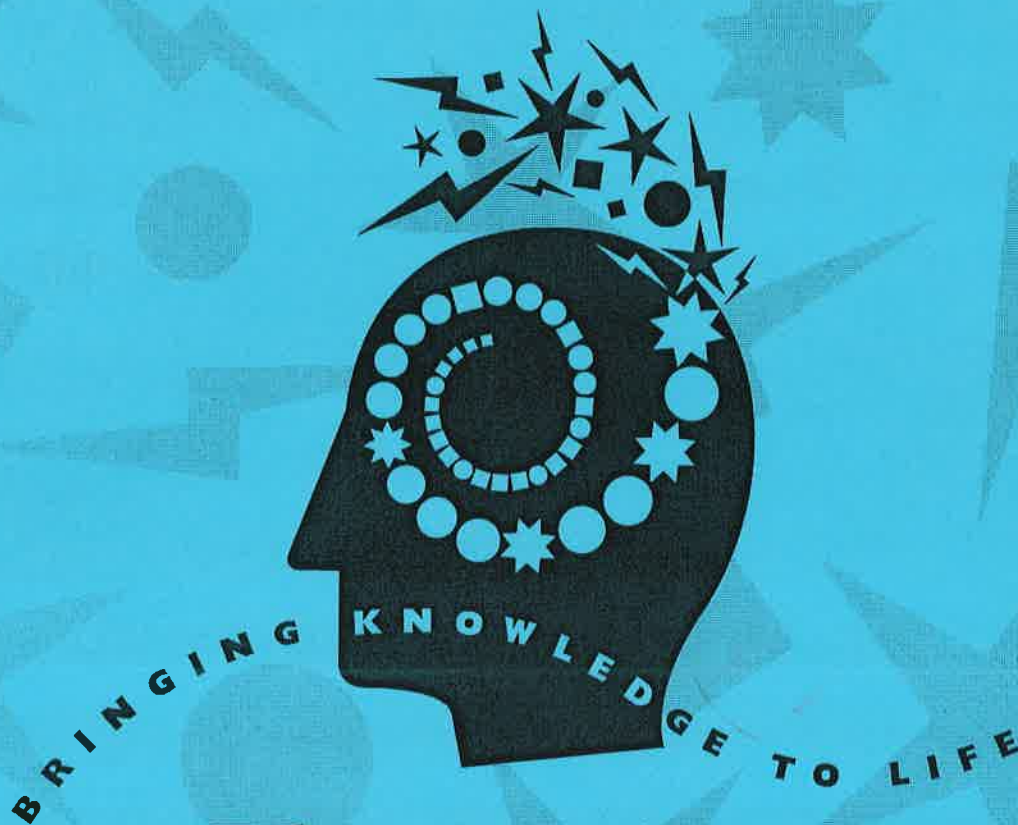
## Recommended Citation

Naranjo, Leandra; Takeuchi, Reimi; Savastano, Peter; and Quizon, Cherubim, "From Colombia to Japan: Anthropology in the Real World" (2004). *Petersheim Academic Exposition*. 39.  
<https://scholarship.shu.edu/petersheim-exposition/39>

# SETON HALL UNIVERSITY

The 2004 Petersheim Academic Exposition  
**“BRINGING KNOWLEDGE TO LIFE”**

**SATURDAY - TUESDAY, APRIL 3-6**



## The Academic **EXPOSITION**

**SETON HALL UNIVERSITY**

Faculty Research Day  
2004

**PROGRAM AND ABSTRACTS**

*[artsci.shu.edu/acadexpo](http://artsci.shu.edu/acadexpo)*

## **From Colombia to Japan: Anthropology in the Real World**

Leandra Naranjo (Diplomacy), Reimi Takeuchi (Anthropology), Peter Savastano (Departments of Sociology and Anthropology) & Cherubim Quizon (faculty sponsor)

Leandra Naranjo will present "Female Child Soldiers in Colombia," revisiting an aspect of her senior thesis in Diplomacy. She will explore questions that arise when female child soldiers also become "wives" among fellow-combatants of the FARC. Reimi Takeuchi will present "Shojin Ryori: Vegetarianism and Contemporary Buddhism in Japan," using the perspective of material culture and religious symbolism, building on a paper in the anthropology of food in the preceding semester, with newly obtained field data. The third presenter will act as discussant. Professor Peter Savastano, specialist on human rights and the anthropology of religion, will comment on the students' research and implications.

**Location: Mooney Hall, Room 22, 1:00 - 2:15, Tuesday**