

1-5-2012

## Circulation @ Seton Hall

Lisa Rose-Wiles  
*Seton Hall University*

Sulekha Kalyan  
*Seton Hall University*

Follow this and additional works at: [https://scholarship.shu.edu/lib\\_pub](https://scholarship.shu.edu/lib_pub)

 Part of the [Library and Information Science Commons](#)

---

### Recommended Citation

Rose-Wiles, Lisa and Kalyan, Sulekha, "Circulation @ Seton Hall" (2012). *Library Publications*. 32.  
[https://scholarship.shu.edu/lib\\_pub/32](https://scholarship.shu.edu/lib_pub/32)

# CIRCULATION @ SETON HALL

*Lisa Rose-Wiles & Sulekha Kalyan  
Seton Hall University*

VALE Users'/NJLA CUS/NJ ACRL Conference,  
Rutgers University, January 5, 2012

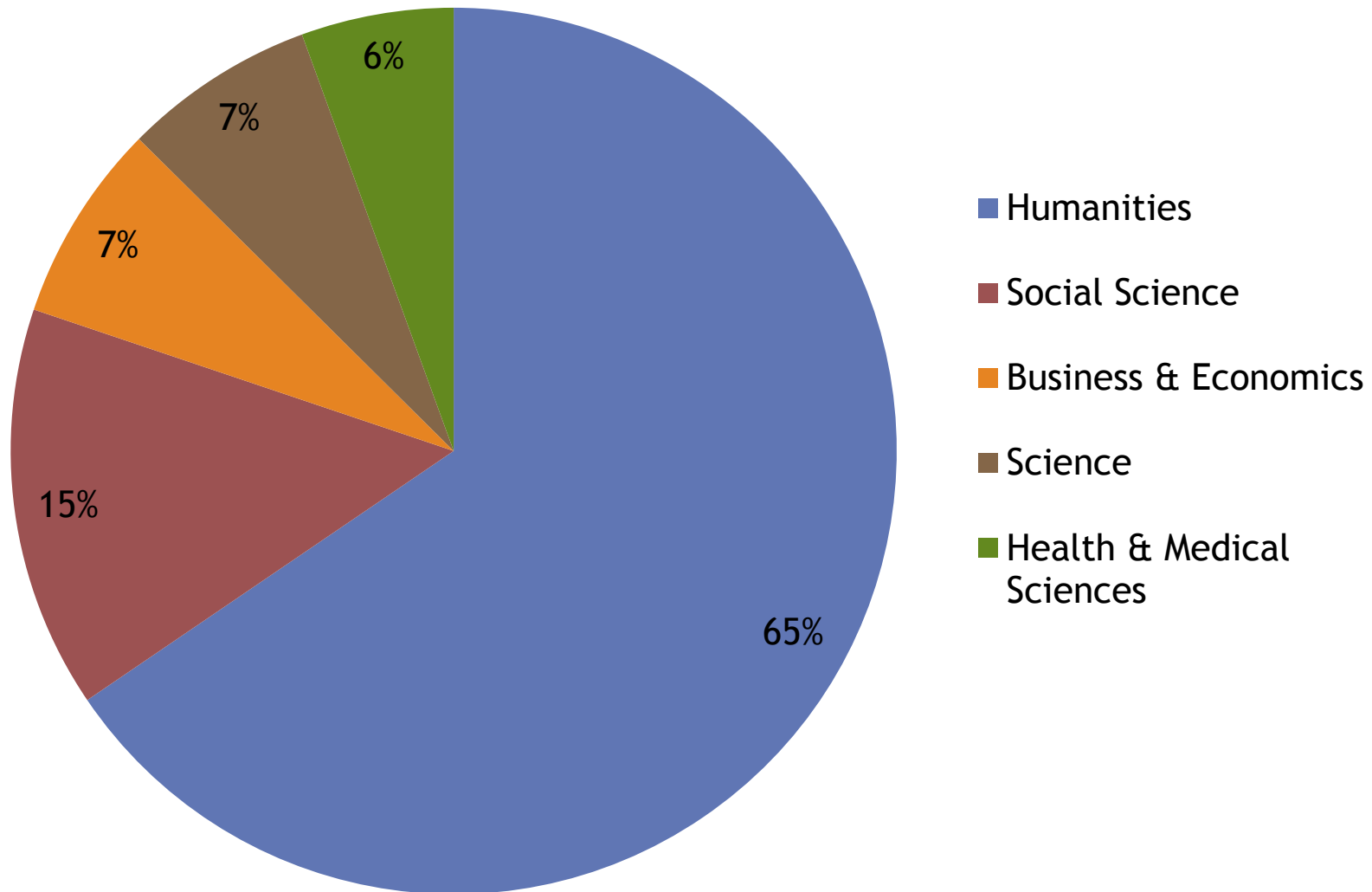
# Seton Hall University

- ◎ **Private, Catholic University**
  - 4,871 undergraduates (88% full time)
  - 3,293 graduates (33% full time).
  - ~800 faculty & staff
- ◎ **Other Walsh Library users**
  - SHU Alumni; others via ReBL, VALE, PALCI, ILL
  - Extended library hours attract local students
- ◎ **Our print book collection.**
  - 500,000+ books (excluding journals, archives and special collections)
  - Concerns re space, maintenance, loss or theft, lack of use/declining circulation.

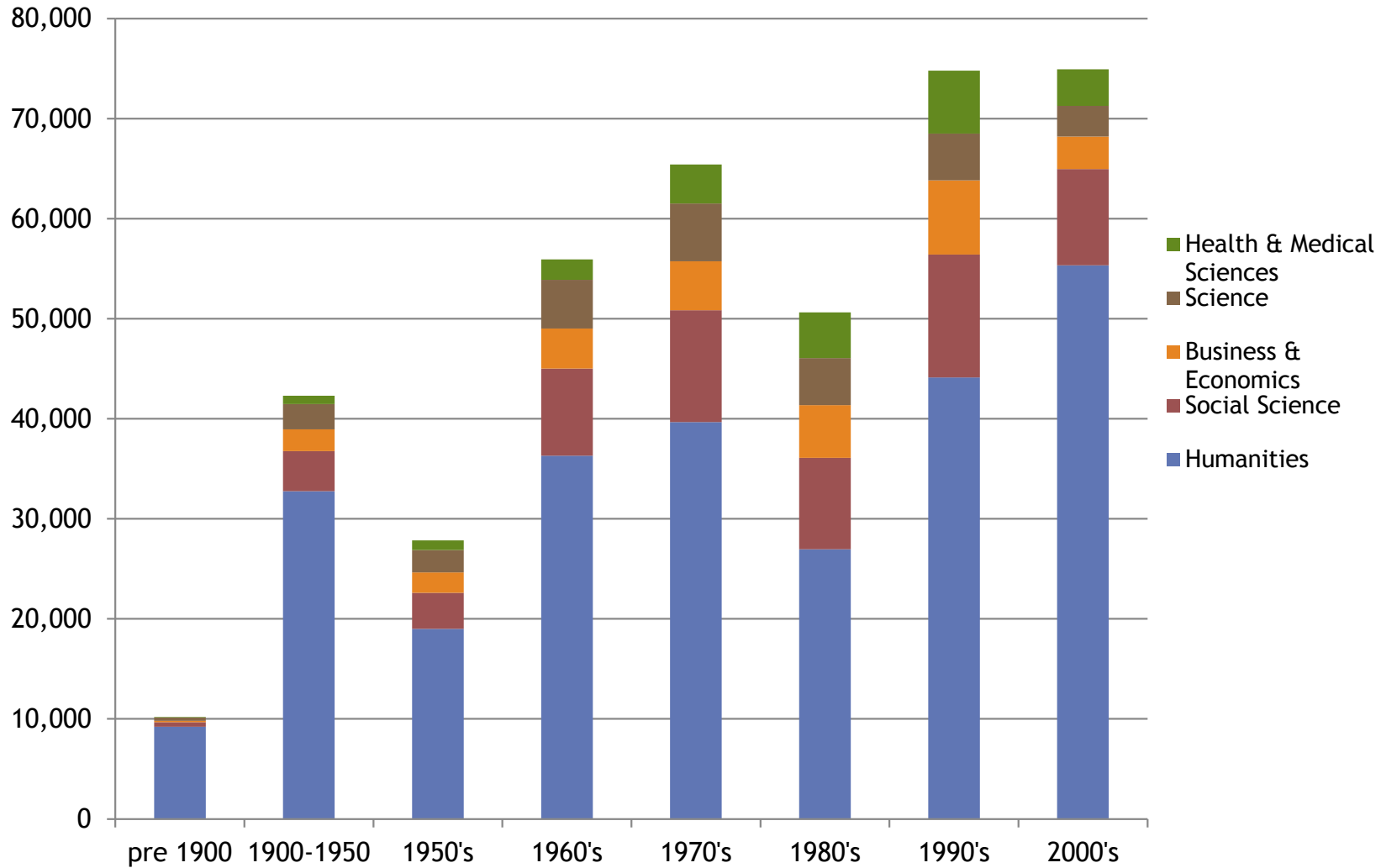


# 1. SHU books by subject area.

Based on OCLC data July 2011, n = 402,112  
excluding government documents & "other"

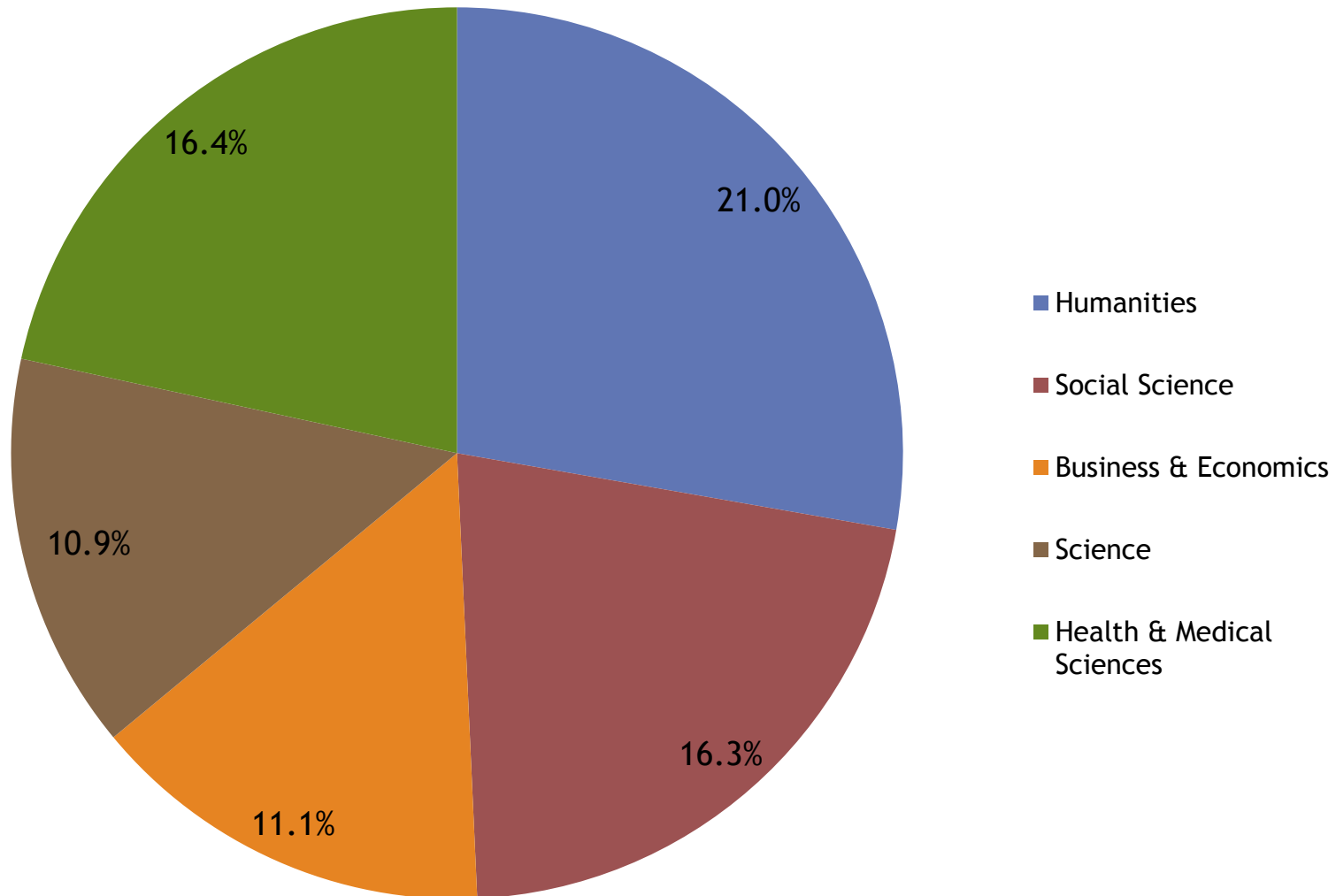


## 2. Number of books in subject area by publication date range.



### 3. Proportion of books in major subject areas published since 2000

(n = 74,945)



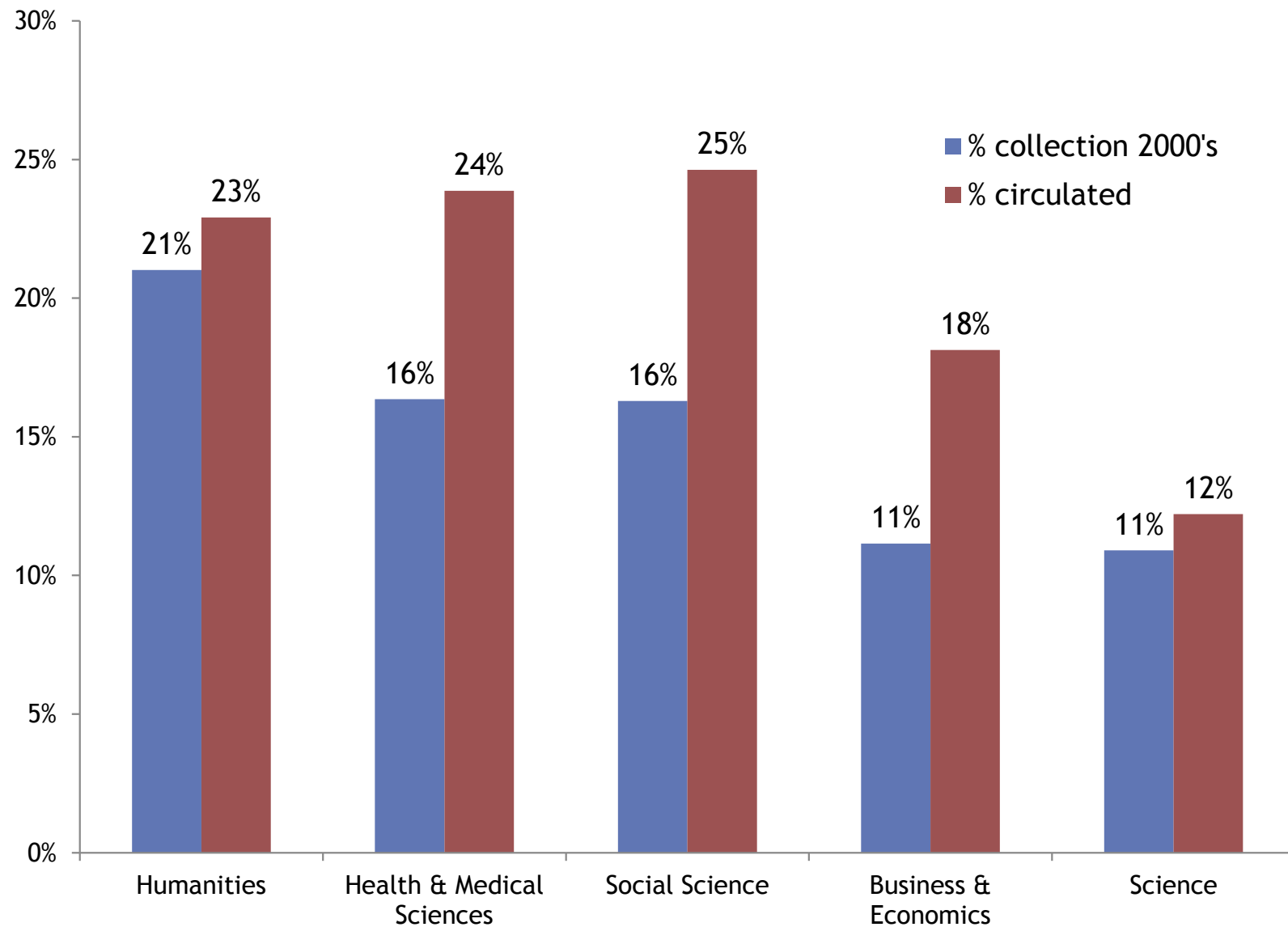
# 4. Circulation of SHU books

based on OCLC circulation data 2005-9

Subject area	% books in subject published in 2000's	% books in subject circulated between 2005 and 2009	Average checkouts 2005-9
Arts	34.4%	28.6%	1.73
Sociology	18.4%	27.9%	2.05
History	22.0%	25.0%	1.95
Health & Medical Sciences	16.4%	23.9%	2.13
Political Science	14.8%	23.7%	2.08
Education	17.1%	23.4%	1.96
Anthropology	30.0%	23.0%	1.83
Psychology	12.0%	22.7%	1.90
Law	14.6%	21.5%	1.82
Other	19.8%	21.1%	1.88
Philosophy & Religion	16.0%	20.9%	1.89
Business & Economics	11.1%	18.1%	1.73
Science	10.9%	12.2%	1.66
Literature	11.7%	9.2%	1.68
<b>Average</b>	<b>17.8%</b>	<b>21.5%</b>	<b>1.88</b>

# 5. Currency vs. circulation

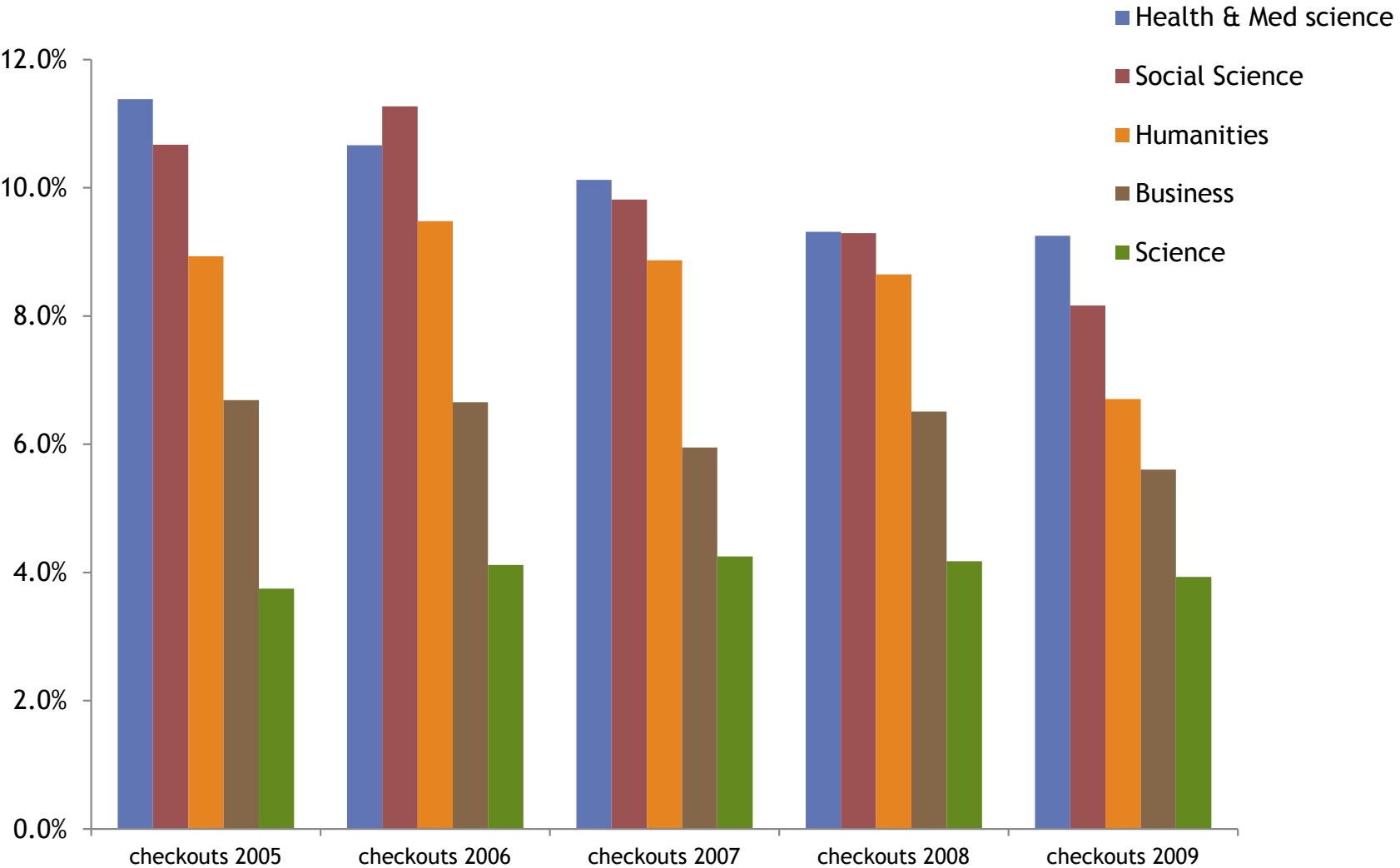
( $r = 0.614$ ,  $df = 12$ ,  $p < 0.05$ )





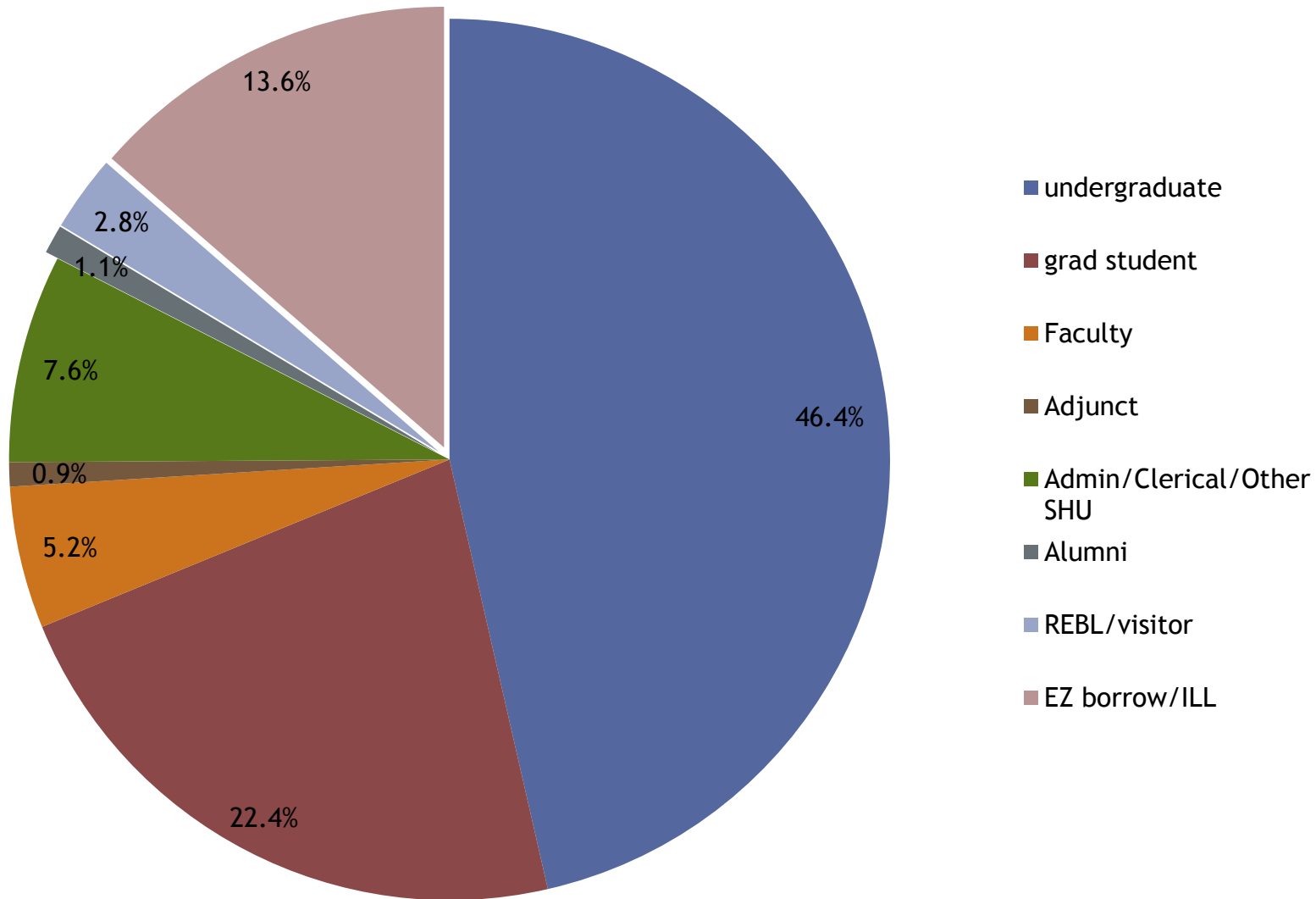
# 6. total checkouts by year and subject 2005-9

(n = 19,208 checkouts)

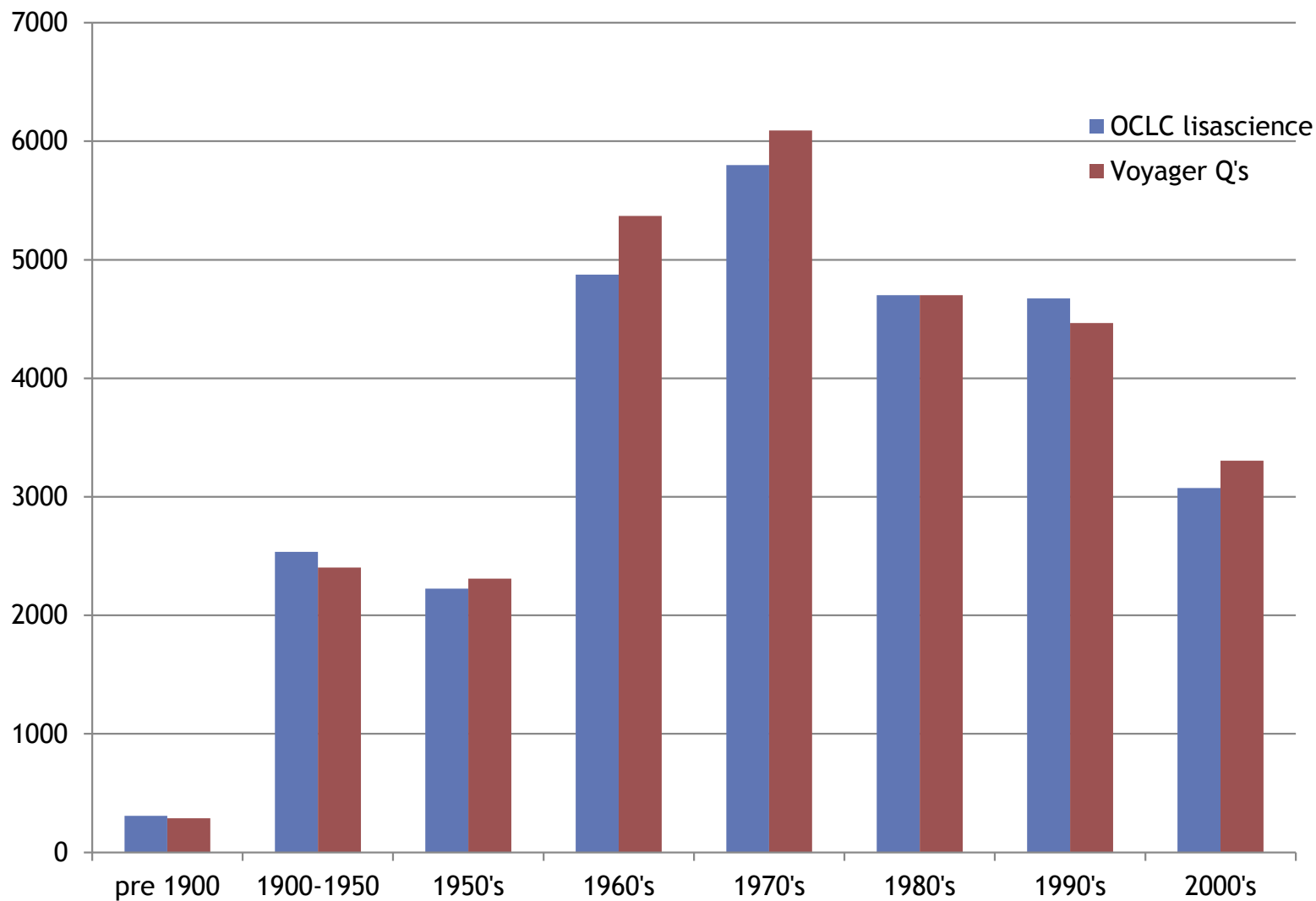


# 7. Checkouts by patron type,

from Voyager data July 2010-11 (n = 38,395 checkouts)

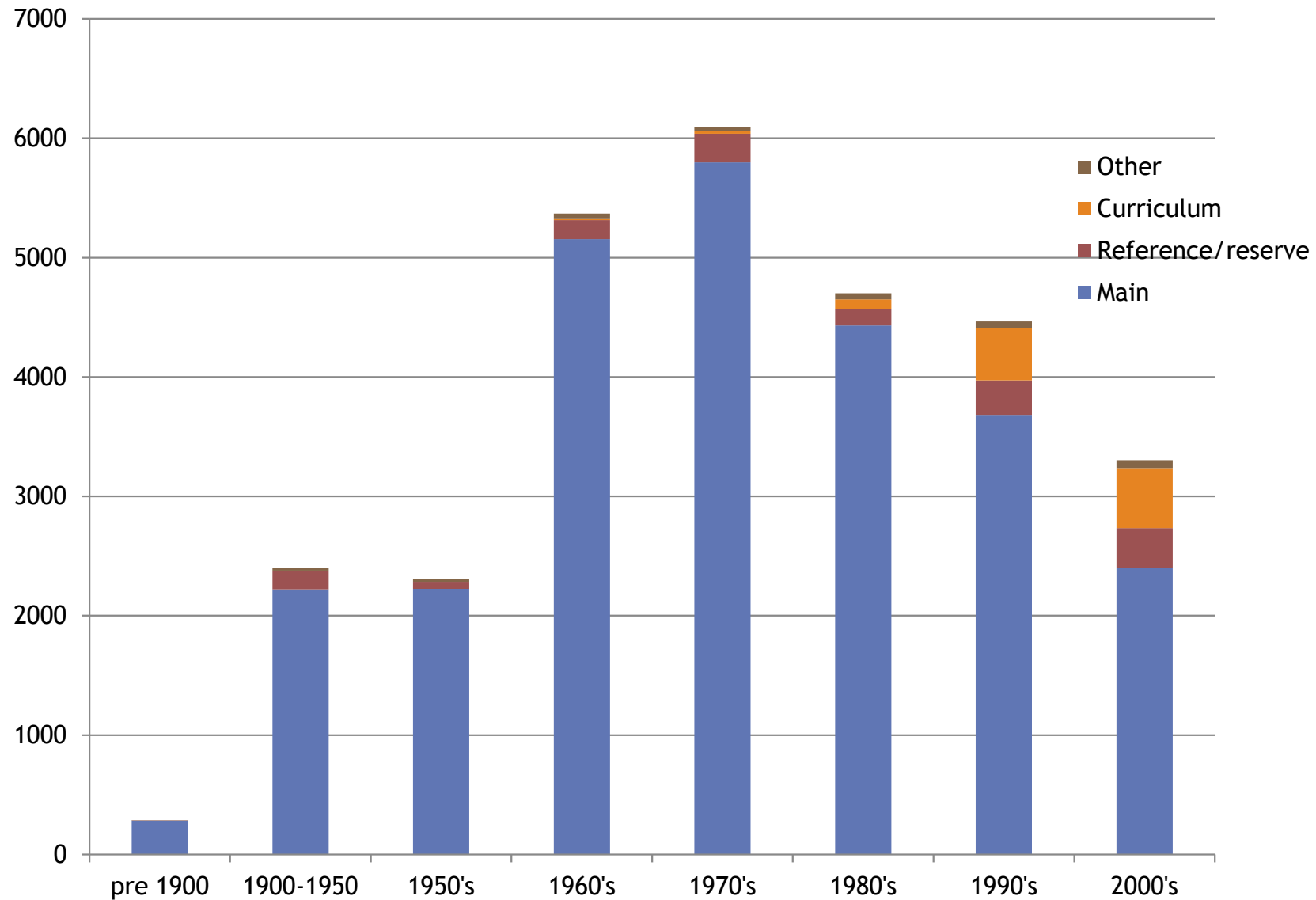


## 8. Science books, OCLC vs. Voyager by date (OCLC = 28,192; Voyager = 28,939 as at July 2011)



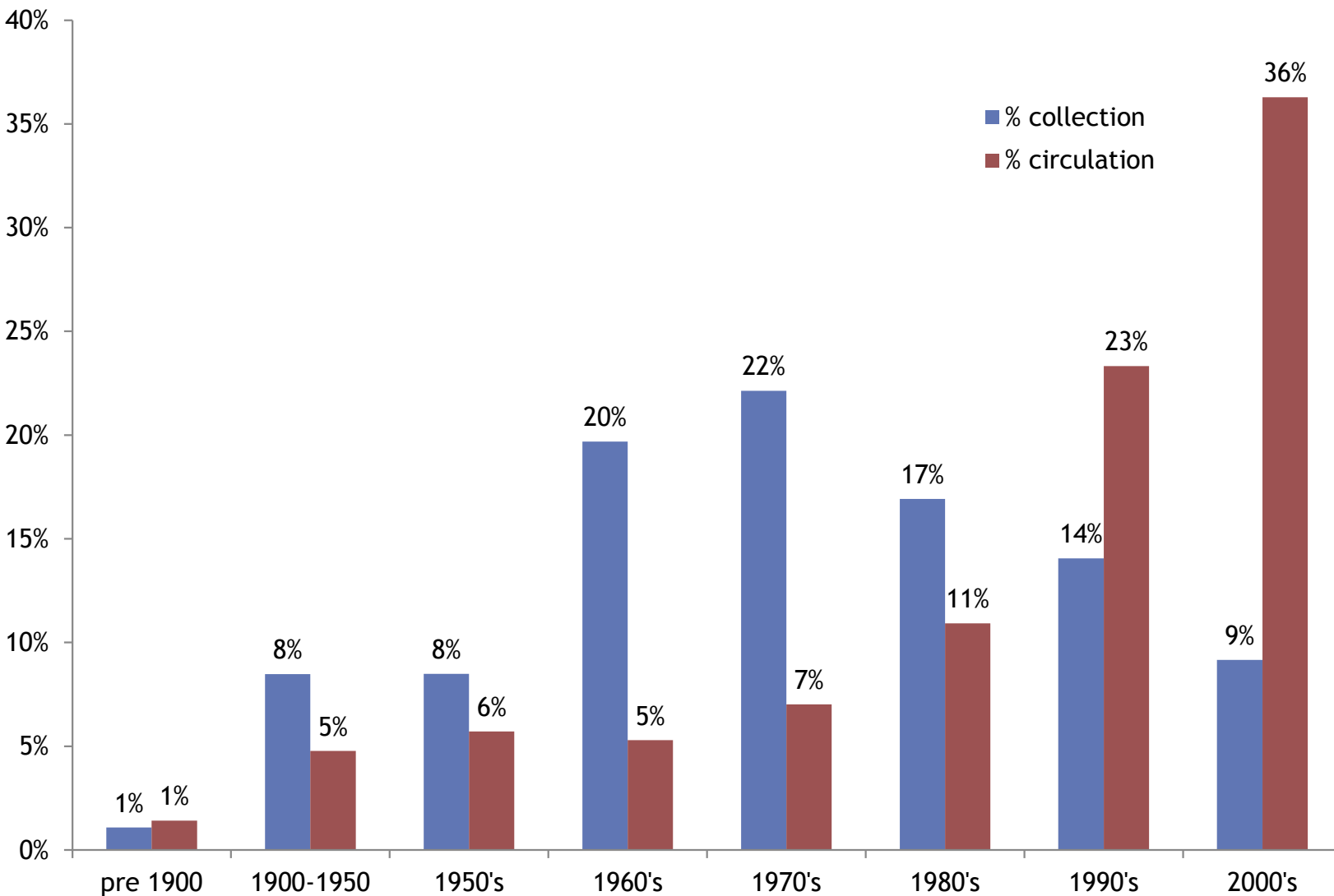
# 9. Science books by date and location

(Voyager data, n = 28,939)

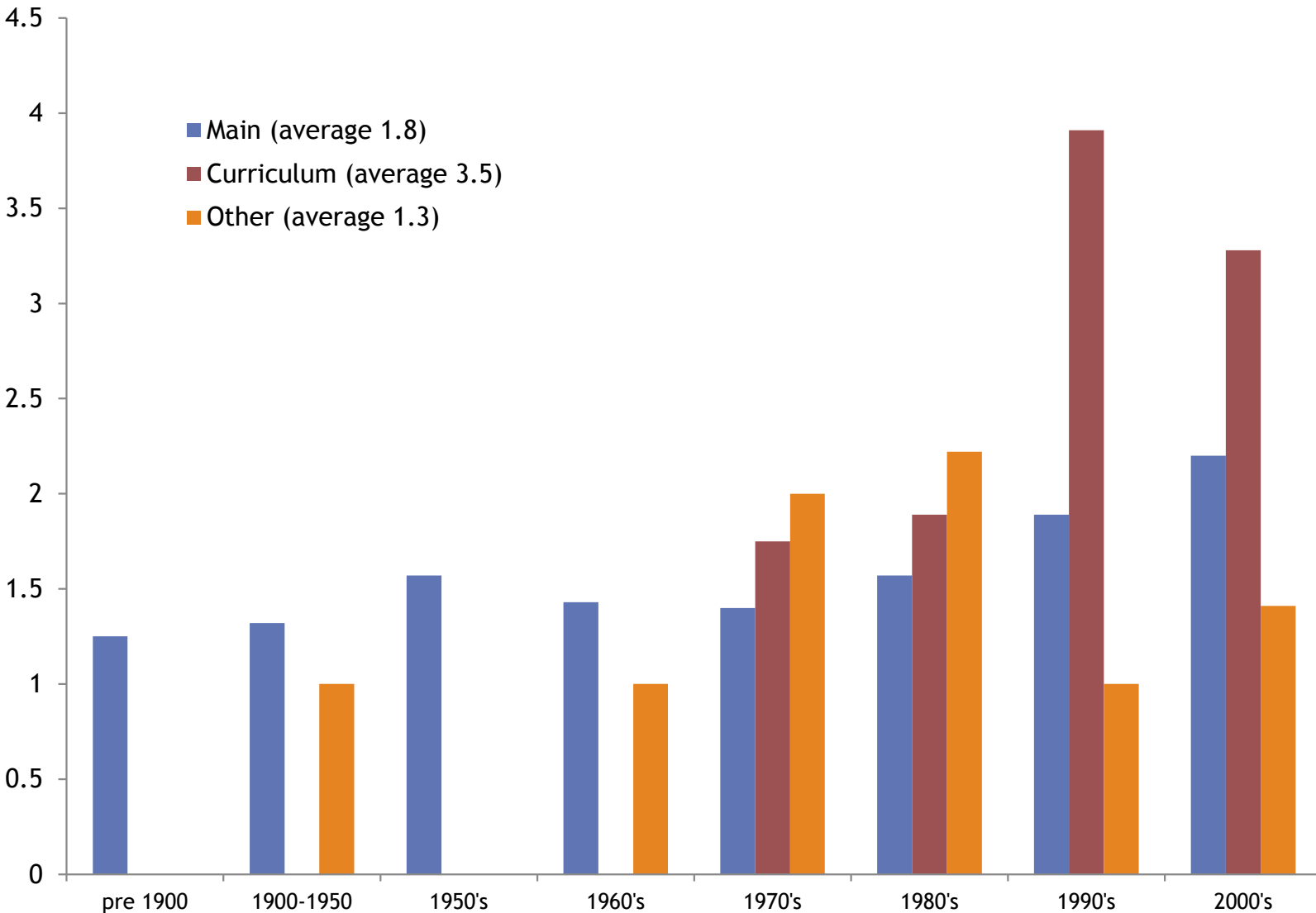


# 10. Main science collection: circulation vs. publication date

(from Voyager data, n = 26,190, average circulated 12%)

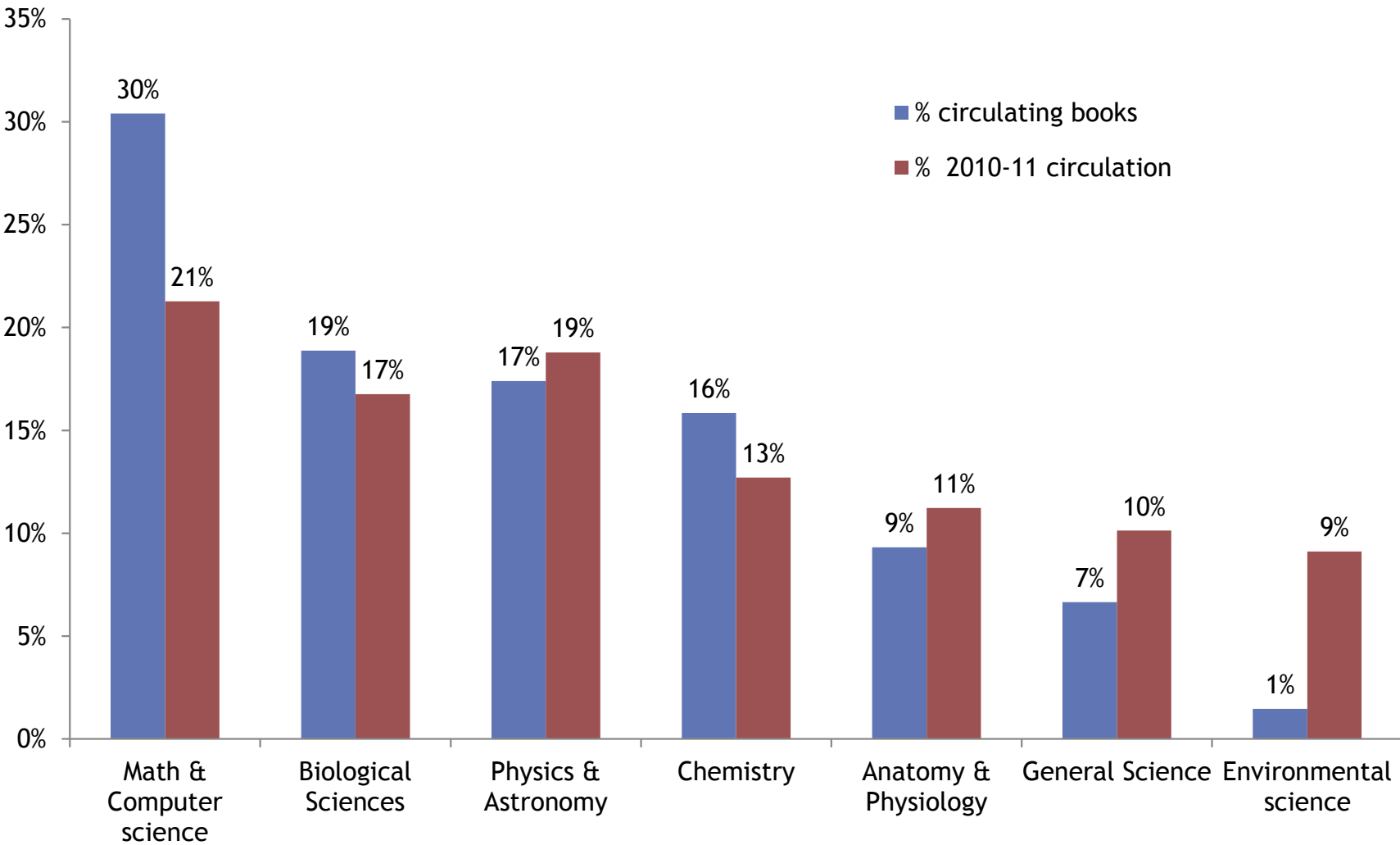


# 11. Average times science Books circulated 2005-10 by location



# 12. % of science collection vs. % of science books circulations 2010-11 by subject

(from Voyager data, n = 1246 science book checkouts)



## *CONCLUSIONS*

- ⦿ 21.5% of our books were checked out at least once (average twice) in the five years 2005-9.
- ⦿ There is variation by subject area, but generally more recent books are more likely to circulate.
- ⦿ Our book collection is stronger and more current in the humanities than in other subject areas.
- ⦿ Our science book collection is small & outdated: 6.4% of total books, almost 90% >10 years old.
- ⦿ Over 36% of “recent” science books circulated & circulation has not declined in past 5 years.
- ⦿ There is not a good fit between subject collections and subject circulation.



# *RECOMMENDATIONS*

- ◎ Judicious weeding is clearly needed
  - some older books are still in demand (or do students disregard publication dates?).
- ◎ We need a better match between our academic programs and collections, especially in the underfunded non-humanities subjects.
  - We need more consultation with faculty, book store, students.
- ◎ Begin a pilot PDA program for e-books with ebrary.
  - 48% of hand-picked e-books were used at least once in the first year. PDA should allow better fit at less cost.
- ◎ Budget, budget, budget!
  - Less money = fewer resources. There is no magic wand.

# *PROGRESS*

- ◎ Inventory and weeding is well underway
  - Better World Books a market/recycler for many unwanted books. We have sent 50+ boxes already.
- ◎ Efforts to reach users ongoing
  - And we are consulting with bookstore re textbooks
- ◎ Pilot PDA has begun with ebrary.
  - We are being conservative (selection not broad profile) but have added 750 books so far.
- ◎ Budget, budget, budget!
  - Driving us to “just in time” vs. “Just in case” ... good, bad, indifferent?

# THANK YOU! QUESTIONS?

Lisa Rose-Wiles, Science Librarian  
Sulekha Kalyan, Head of Acquisitions  
Seton Hall University Libraries

[Lisa.rose-wiles@shu.edu](mailto:Lisa.rose-wiles@shu.edu)

[Sulekha.kalyan@shu.edu](mailto:Sulekha.kalyan@shu.edu)